

DIR

Ceramic Glass Patio Infrared Heater



Features

Finish

- Clear anodized aluminum and black tinted glass.

Voltage

- 120V, 240V, 60 Hz, 1-phase.

Construction

- Weatherproof IP65 certified for outdoor and indoor use.
- Anodized aluminum extrusion casing. **1**
- 304 stainless steel mounting brackets.
- Schott Nextrema® ceramic tinted glass panel combines high-temperature, thermal shock and chemical resistance, excellent infrared transmission, non-porous surface and attractive design. **2**
- Safety mechanism that automatically triggers the heater to go into Standby mode after 8 hours of operation.

Heating element

- Ruby halogen bulb provides full power in less than 6 seconds. **3**
- Element service life ± 5000h.

Control

- Remote control included.
- 3 heat settings for optimal comfort: "Low", "Medium" or "High".
- Programmable timer that will automatically place the heater in Standby mode after 1, 2 or 3 hours of operation.

Installation

- Hard-wired into an electrical junction box (not included) for permanent installation.
- Pivoting mounting brackets included, allowing angle adjustment.
- Surface, wall or ceiling installation for 1500W and 1800W models.
- Surface, wall installation only for 2200W and 3000W models.
- Minimum clearance: 7.9 ft. (2.4 m) from floor.
- Other clearances will vary according to the installation. Refer to installation guide for complete details.
- Horizontal installation only.

Warranty

- 1-year warranty against defects.
- The heating element is not covered by the warranty and is the sole responsibility of the owner/purchaser.

Application

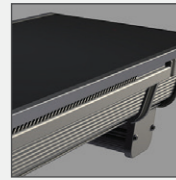
- Workshop, garage, solarium, pool and spa, balcony, patio, bar, restaurant, hotel, church.

The precision-engineered ceramic glass patio infrared heater provides premium performance that heats as beautifully as it looks.

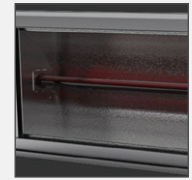
With full heating power available in under 6 seconds, you can go from cold to comfortable with a quick touch of the remote control.



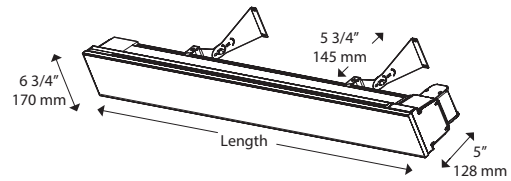
1



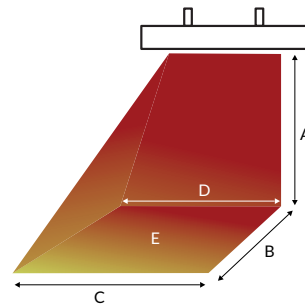
2



3



Heating area wall-mounted



Indoor heating area wall-mounted

Watts	A		B		C		D		E (approx.)	
	ft.	m	ft.	m	ft.	m	ft.	m	ft. ²	m ²
1500	7 7/8	2.4	10 7/8	3.3	11 7/8	3.6	8 7/8	2.7	112	10.4
1800	7 7/8	2.4	7 7/8	2.4	12 1/2	3.8	9 1/2	2.9	90	8.4
2200	7 7/8	2.4	11 1/2	3.8	13 1/8	4	10 1/4	3.1	145	13.5
3300	7 7/8	2.4	13 1/8	4	18 3/8	5.6	14 1/8	4.3	215 3/8	20

Outdoor heating area wall-mounted

Watts	A		B		C		D		E (approx.)	
	ft.	m	ft.	m	ft.	m	ft.	m	ft. ²	m ²
1500	7 7/8	2.4	8 1/4	2.8	10 1/4	3.1	7 1/4	2.2	80	7.4
1800	7 7/8	2.4	6 5/8	2	8 1/4	2.5	6 7/8	2.1	49 1/2	4.6
2200	7 7/8	2.4	10 1/2	3.2	11 1/2	3.5	19 3/4	2.6	105	9.8
3300	7 7/8	2.4	11 1/2	3.5	16	4.9	11 7/8	3.6	161 1/2	16

Models

Product # ¹	Price	Installation	Volts	Watts	Length		Weight	
					in.	mm	lb	kg
DIR15A10GR	675.00	Wall, ceiling	120	1500	35 1/2	902	13.3	6.0
DIR18A10GR	709.00	Wall, ceiling	240	1800	35 1/2	902	13.3	6.0
DIR22A10GR	743.00	Wall	240	2200	35 1/2	902	13.3	6.0
DIR30A10GR	1273.00	Wall	240	3000	50 5/8	1286	16.6	7.5

¹Mounting brackets included.

